

# Watford's lighthouse unveiled



## The Lighthouse, Watford

Britain's first zero-carbon house that also meets the highest level of the Code for Sustainable Homes. As well as using environmentally-friendly construction, it is designed to encourage the occupants to live in a greener way.

Architect: Sheppard Robson

Status: Prototype completed and in place



## The Droveaway, Brighton

Modernist-influenced family home with long views to the sea. The two bedroom "wings" fan off a double-height central living room.

Architect: Alan Phillips Architects

Status: Completed



## The Salt House, St Lawrence Bay, Essex

Two-storey home at the end of a terrace of 19th-century timber-boarded oyster fishermen's houses overlooking the sea. It can be jacked up to a higher level to survive long-term water level rises.

Architect: Alison Brooks Architects

Status: Completed

## Britain's first zero-carbon home vies for design prize

ELIZABETH HOPKIRK

A LIGHTHOUSE in Watford is named today as one of the best new houses in the world.

It is one of Britain's first zero-carbon homes and is seen as a prototype for other environmentally friendly new-build housing.

It is also among properties in and around London on a 25-strong longlist of developments worldwide in the running to be named house of the year.

Judges will meet tonight at the Royal Institute of British Architects in Portland Place to select the winner.

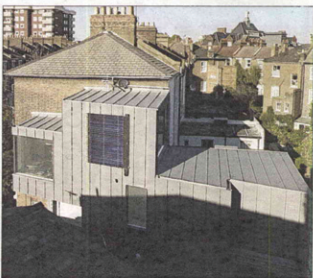
Sara Mercer, assistant editor of WorldArchitectureNews.com, which organises the awards, said: "With hundreds of entries from around the world, it is a real achievement to get on to the longlist."

"The fact there are so many projects representing London and the South-East is a great reflection of the quality of architecture here."

The five judges, led by Richard Coleman, who has worked on several landmark developments including the Gherkin, are looking for originality, innovation and sustainability as well as how the project overcame a difficult context.

The British houses are up against homes in Austria, Spain, Croatia, Japan, Australia and America.

The most unusual design is from Mexico, where cave-like rooms filled with vegetation have been created inside what looks like a giant shell. Other contenders include a pyramid-shaped house in Japan made from acrylic and a home near Melbourne resembling an exploding letter K.



## Fincus House, Finsbury Park

Zinc-wrapped family home in a street of Victorian terraces. It is designed to be low-cost, low-maintenance and low-energy.

Architect: Bere Architects

Status: Completed



## The Long House, St John's Wood

A 720-square metre contemporary family house in a conservation area. A "secret house" screened from the outside world, it is largely one-storey and has glazed walls and an underground lap pool.

Architect: Keith Williams Architects

Status: Completed

[worldarchitecturenews.com](http://worldarchitecturenews.com)  
to see full list of finalists